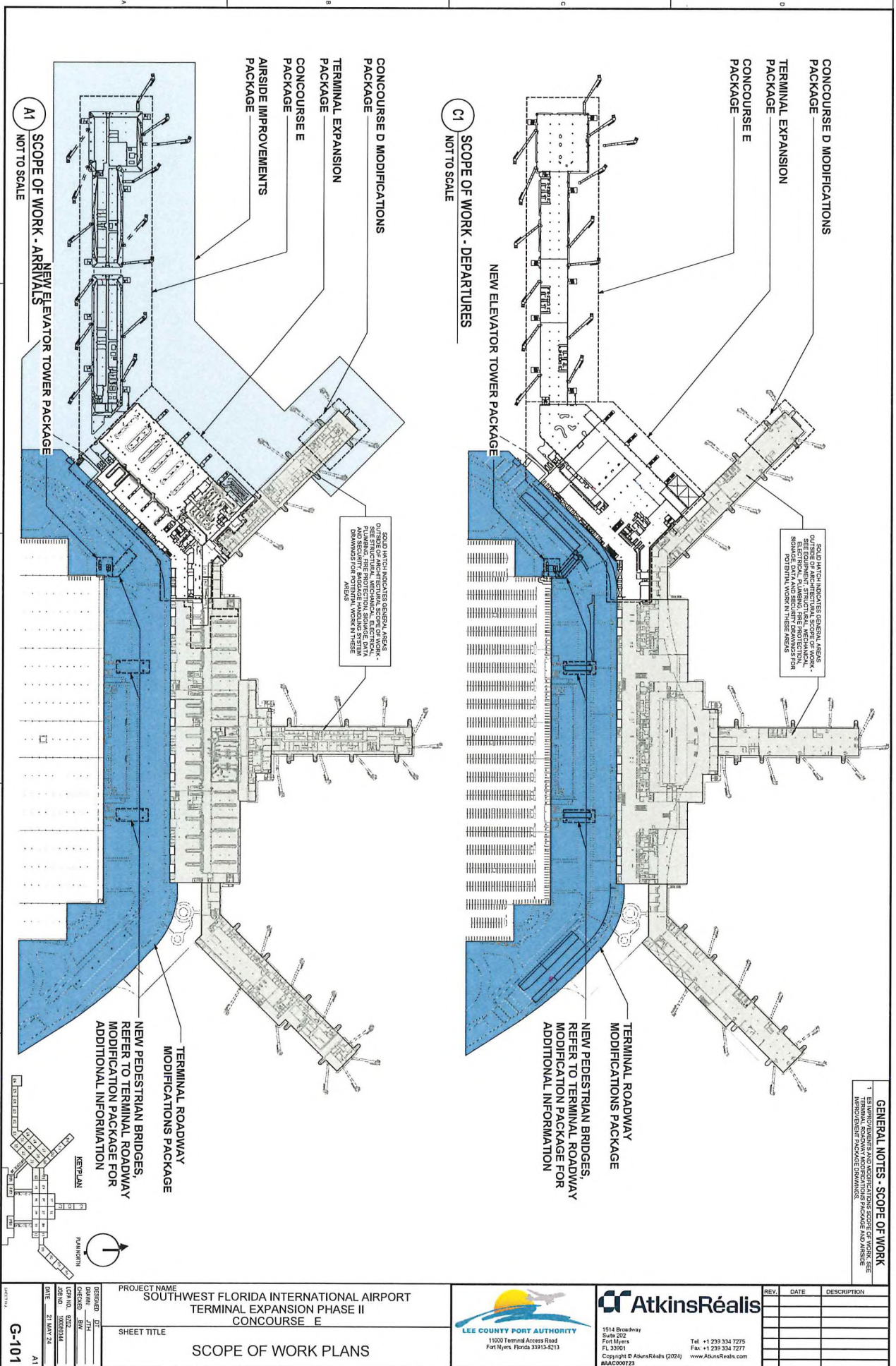
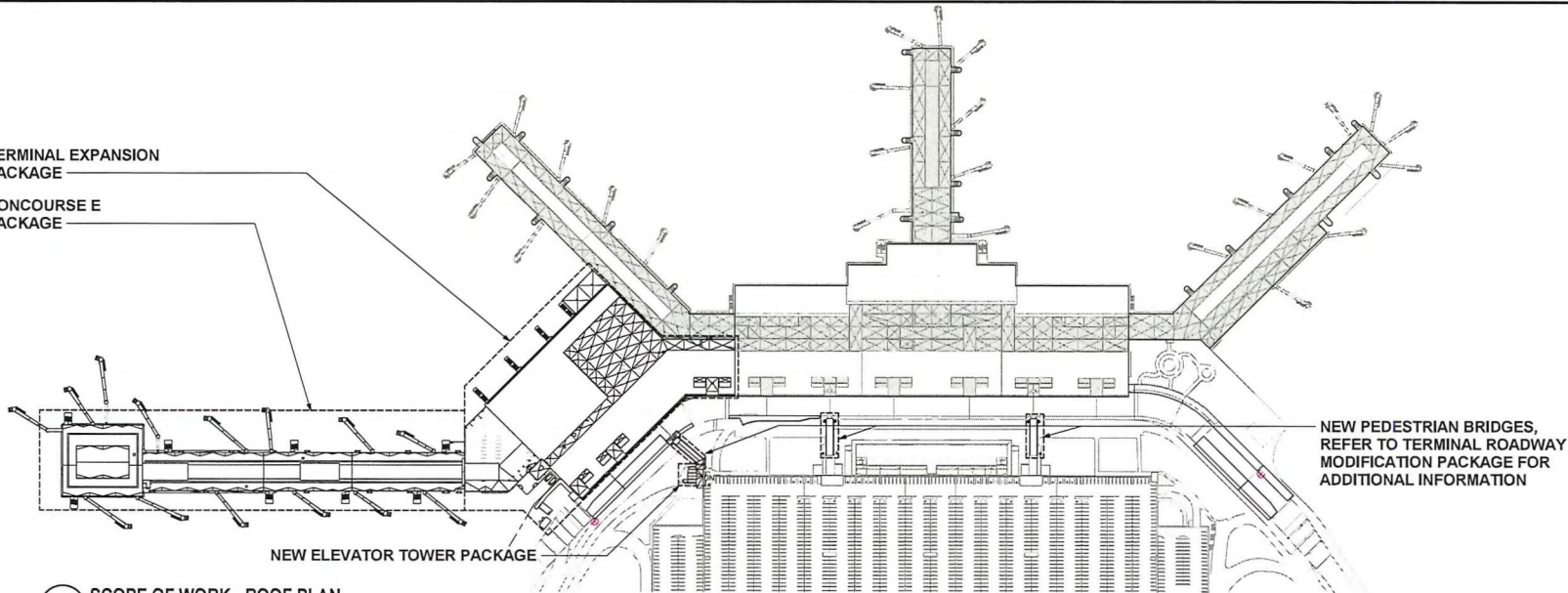
[illegible]

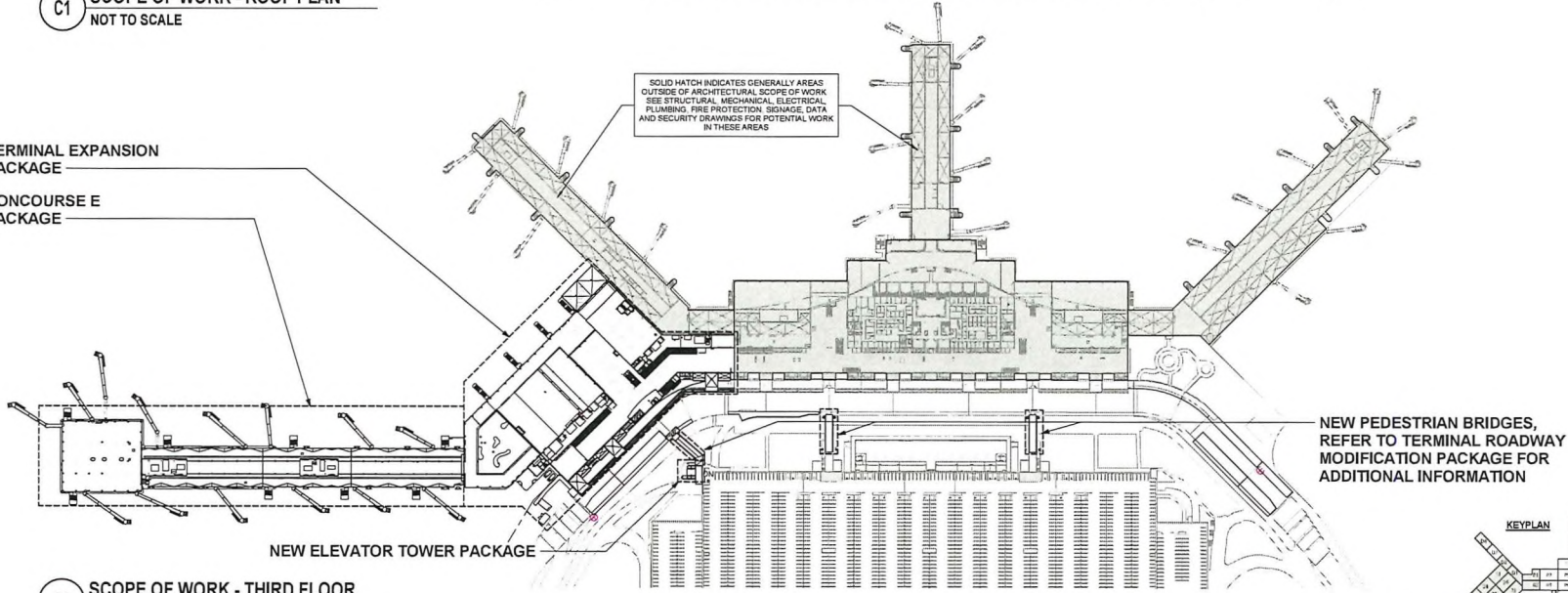


TERMINAL EXPANSION
PACKAGE
CONCOURSE E
PACKAGE



C1 SCOPE OF WORK - ROOF PLAN
NOT TO SCALE

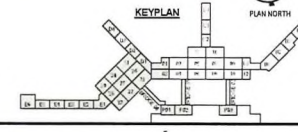
TERMINAL EXPANSION
PACKAGE
CONCOURSE E
PACKAGE



A1 SCOPE OF WORK - THIRD FLOOR
NOT TO SCALE

NEW PEDESTRIAN BRIDGES,
REFER TO TERMINAL ROADWAY
MODIFICATION PACKAGE FOR
ADDITIONAL INFORMATION

NEW PEDESTRIAN BRIDGES,
REFER TO TERMINAL ROADWAY
MODIFICATION PACKAGE FOR
ADDITIONAL INFORMATION



REV	DATE	DESCRIPTION

AtkinsRéalis

1914 Broadway
Fort Myers, FL 33901
Tel: +1 239 334 7275
Fax: +1 239 334 7277
www.atkinsrealis.com

LEE COUNTY PORT AUTHORITY

11000 Terminal Access Road
Fort Myers, Florida 33913-5213

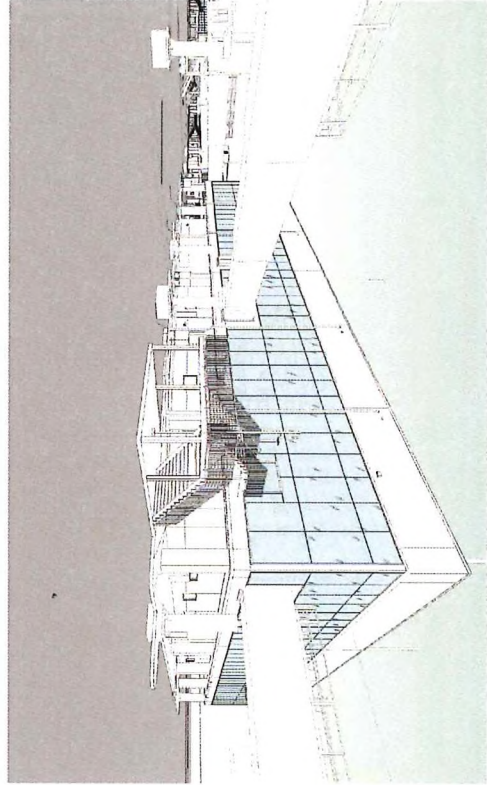
PROJECT NAME
**SOUTHWEST FLORIDA INTERNATIONAL AIRPORT
TERMINAL EXPANSION PHASE II
CONCOURSE E**

SHEET TITLE
SCOPE OF WORK PLANS

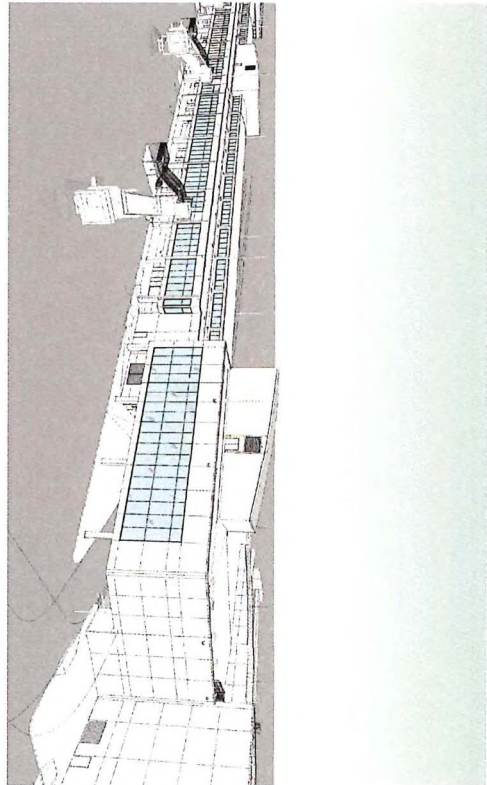
DESIGNED	DT
DRAWN	JTH
CHECKED	BW
LCPIA NO	0702
JOB NO	100060334
DATE	21 MAY 24

A1

G-102



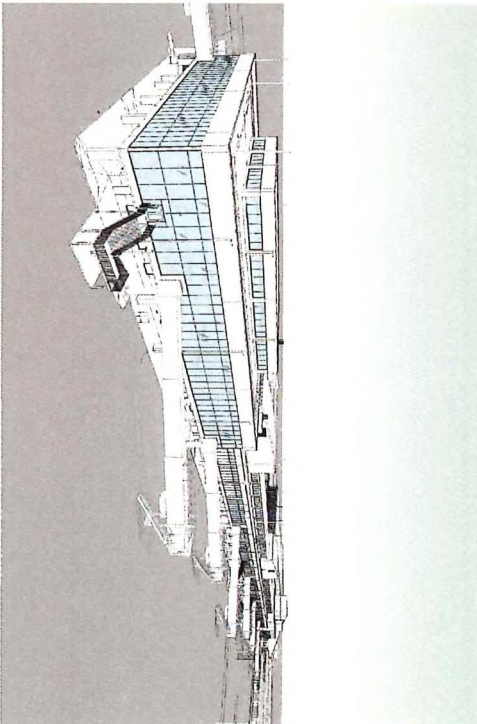
C1 3D - PERSPECTIVE VIEW 01



C3 3D - PERSPECTIVE VIEW 03



A1 3D - PERSPECTIVE VIEW 02



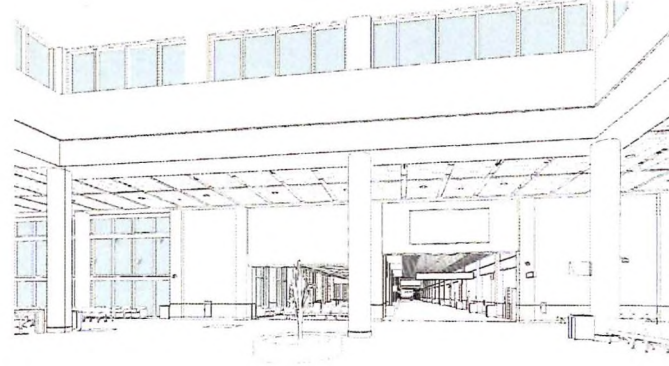
A3 3D - PERSPECTIVE VIEW 04



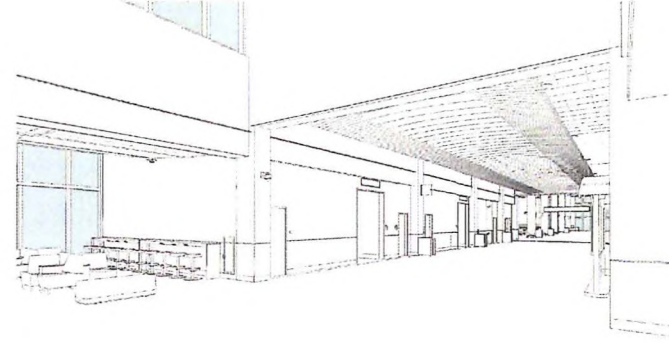
A1 3D - PERSPECTIVE VIEW - CONCOURSE HEADHOUSE INTERIOR 1



C1 3D - PERSPECTIVE VIEW - CONCOURSE CORRIDOR INTERIOR ZONE E2



A3 3D - PERSPECTIVE VIEW - CONCOURSE HEADHOUSE INTERIOR 2



C3 3D - PERSPECTIVE VIEW - CONCOURSE CORRIDOR INTERIOR ZONE E5

PROJECT NAME
SOUTHWEST FLORIDA INTERNATIONAL AIRPORT
TERMINAL EXPANSION PHASE II
CONCOURSE E

SHEET TITLE
3D VIEWS CONCOURSE INTERIOR

DESIGNED DT
DRAWN JN
CHECKED DW
LCPIA NO. 6782
JOB NO. 10060334
DATE 21 MAY '24



REV	DATE	DESCRIPTION

