

[illegible]

DESIGNED	JRC
DRAWN	FAS
CHECKED	REE
LCPA NO.	
JOB NO.	100050334
DATE	

G7.101

(NAVD) OF 1988 UNLESS OTHERWISE NOTED. CONVERSION TO NATIONAL
GEODETIC VERTICAL DATUM (NGVD) OF 1929 IS NAVD 1988 (+) 1.18 = NGVD 1929

PROJECT NAME
SOUTH

PROJECT NAME	TITLE
SOUTHWEST FLORIDA INTERNATIONAL AIRPORT	AIRSIDE IMPROVEMENTS - BID PACKAGE 1
TERMINAL EXPANSION PHASE II	

1. SOLID WASTE MANAGEMENT REQUIREMENTS SHALL BE MET USING THE AIRSIDE IMPROVEMENTS PACKAGE 2. BID PACKAGE 1 INCLUDES THE SITE PREPARATION, AIRFIELD PAVING, AND AIRFIELD ELECTRICAL. THE COUNTY GUIDANCE, THE TRASH COMPACTOR LOCATIONS, AND THE WASTE DISPOSAL METHOD WILL BE SIMILAR TO WHAT IS CURRENTLY USED FOR CONCOURSE B THRU D AND THE EXISTING TERMINAL.
2. THE AIRSIDE IMPROVEMENTS PACKAGE IS SPUT INTO BID PACKAGE 1. BID PACKAGE 2 OF BID PACKAGE 1 INCLUDES THE SITE PREPARATION, AIRFIELD PAVING, AND AIRFIELD ELECTRICAL. BID PACKAGE 2 INCLUDES BALANCE OF SITE PREPARATION, AIRFIELD PAVING, AND AIRFIELD ELECTRICAL.

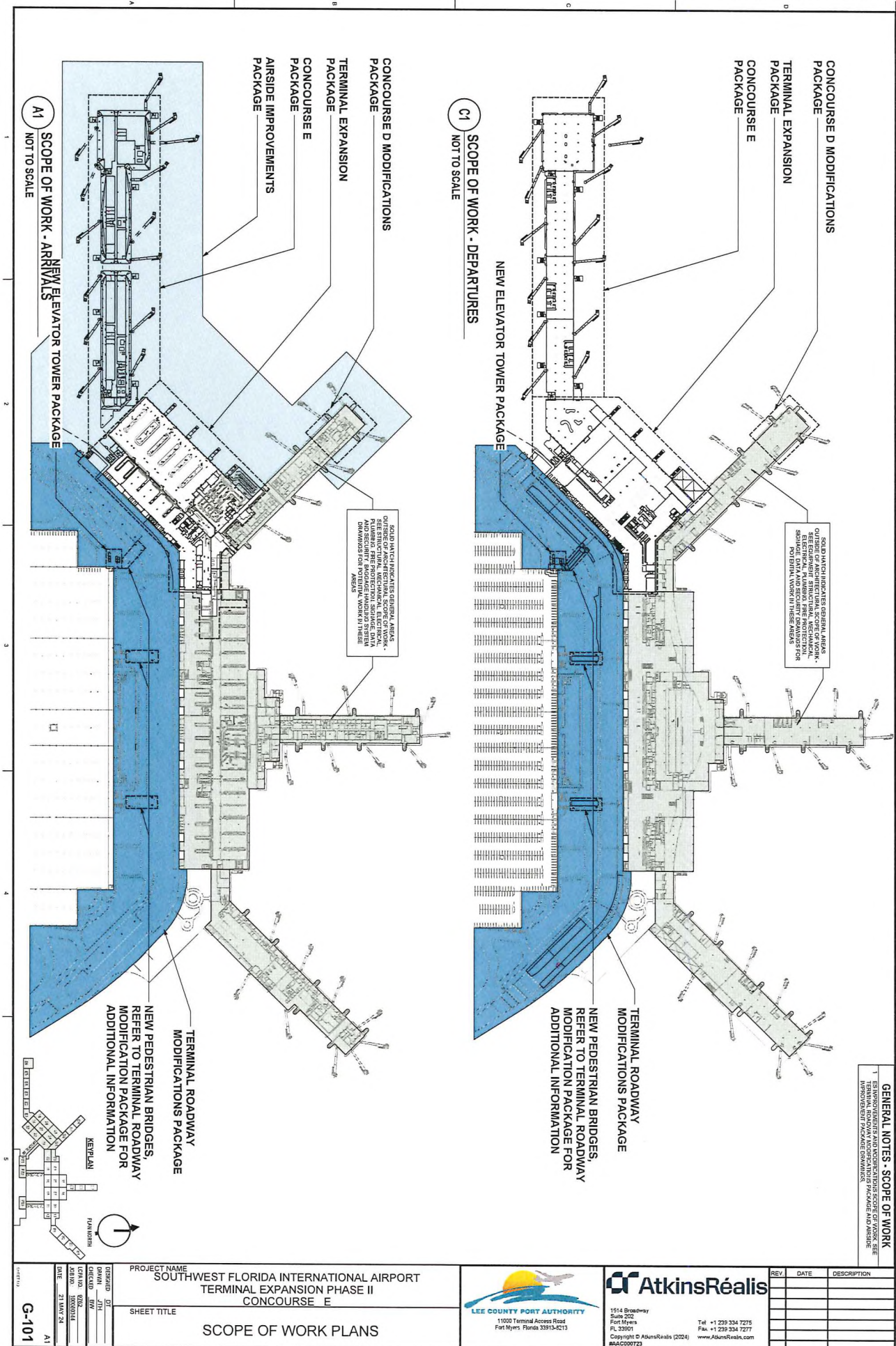
EFFICIENCY AND CONSISTENCY STATEMENT

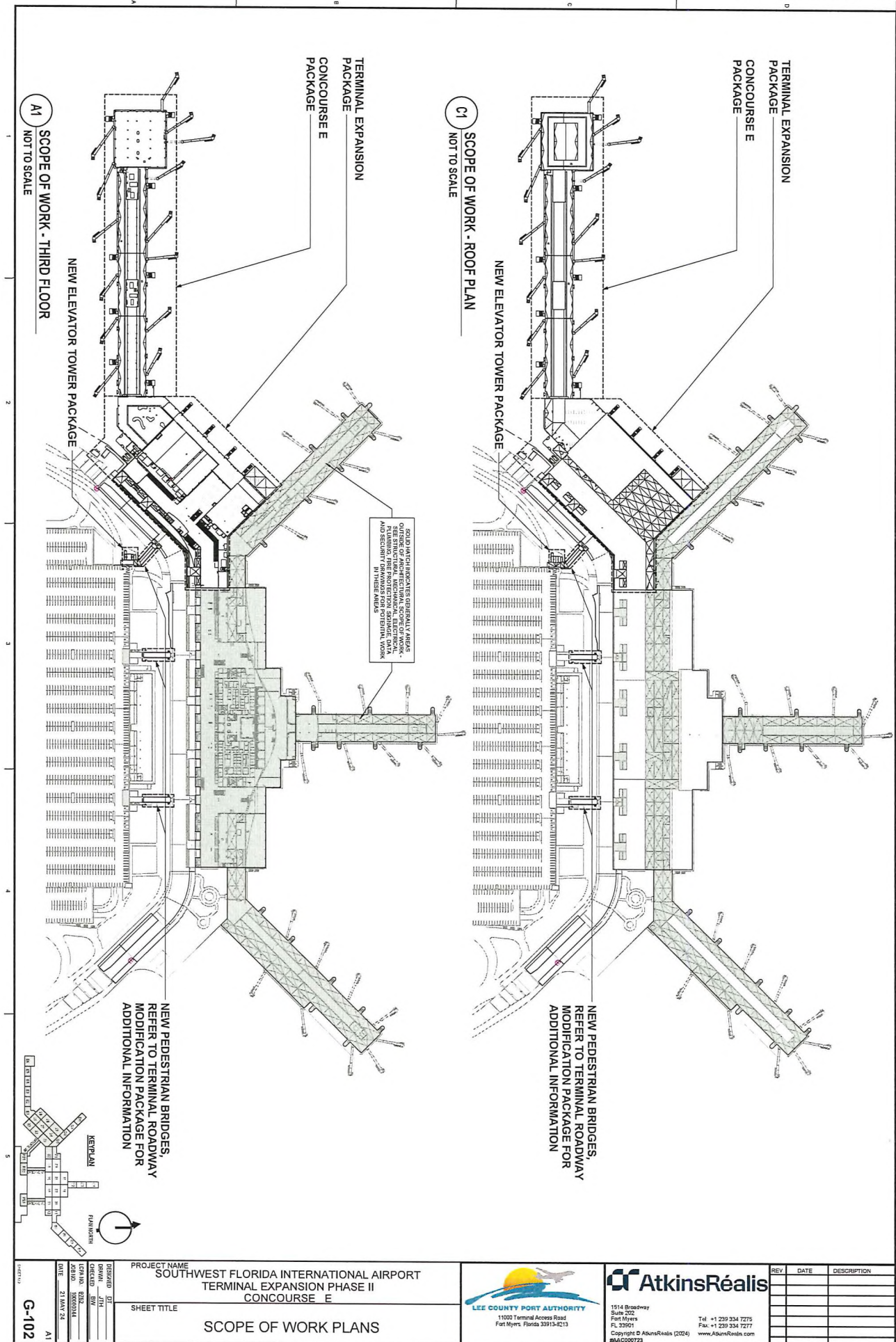
THE SUBJECT PROPERTY IS DESIGNATED AIRPORT PER THE LEE COUNTY FUTURE LAND USE MAP. PROPOSED EXPANSION OF THE AIRPORT TERMINAL IS CONSISTENT WITH THE AIRPORT FUTURE LAND USE DESIGNATION. THE RSW AIRPORT MASTER PLAN AND THE AIRPORT CAPACITY EXPANSION OBJECTIVES UNDER GOAL 47 OF THE TRANSPORTATION ELEMENT OF THE LEE COUNTY COMPREHENSIVE LAND USE PLAN CALL FOR PUBLIC USE AIRPORT. THIS WILL MAINTAIN CONSISTENCY WITH THE AIRPORT FUTURE LAND USE DESIGNATION. THE AIRPORT TRACT 1081, WHICH ALLOCATES PUBLIC LAND AREA OF 9,660 ACRES TO THE CATYVAIRPORT PLANNING COMMUNITY

0 300' 600'

SCALE 1" = 300'

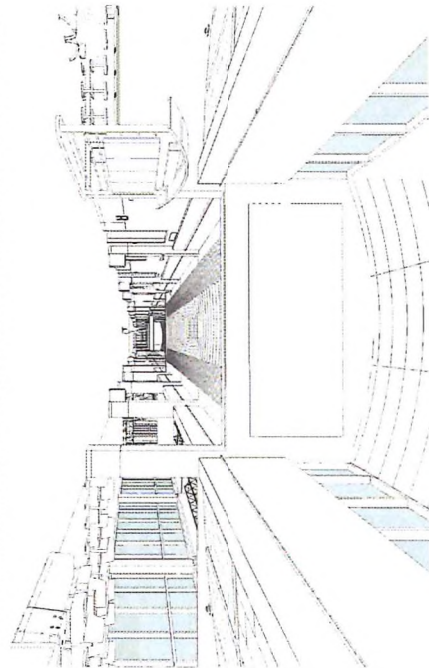
SCALE 1' = 300'



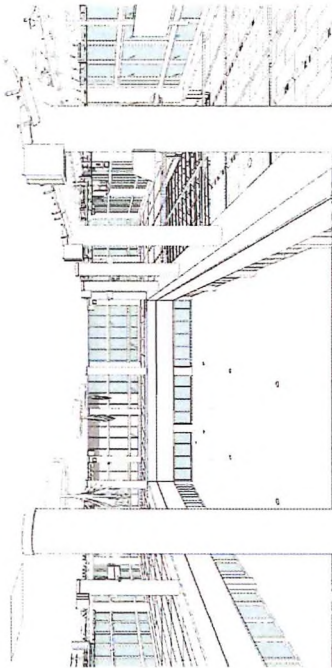


G-103

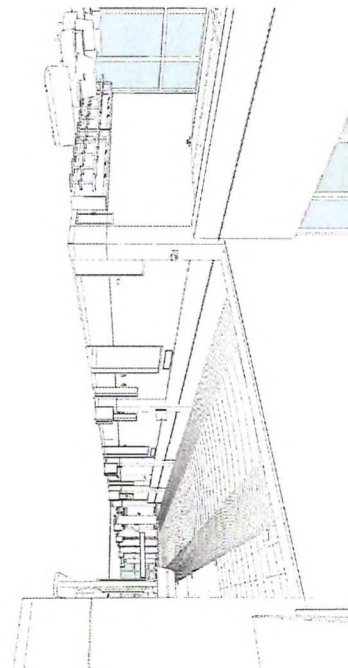
C1
3D - PERSPECTIVE VIEW - CONCOURSE CORRIDOR INTERIOR ZONE E2



A1
3D - PERSPECTIVE VIEW - CONCOURSE HEADHOUSE INTERIOR 1



C3
3D - PERSPECTIVE VIEW - CONCOURSE CORRIDOR INTERIOR ZONE E5



A3
3D - PERSPECTIVE VIEW - CONCOURSE HEADHOUSE INTERIOR 2

